

LE Patronorum

Cf. LE S:ti Eri

S-SK Skara mhs 1
S.16:1, fol.160v



Tri - um - pho gau - dent re - gi - o a - mic - ti sto - lis glo - ri - e

S-Häa Bygdeå-hs
S.16:1, fol. 38v



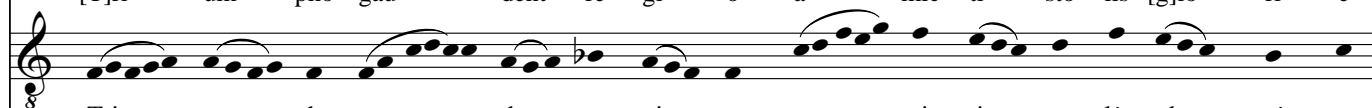
Tri - um - pho gau - det re - gi - o a - mic - ti sto - lis glo - ri - e

S-Sr fr. 20378
Ant 163, S.15:2
(Clefs missing at places)



[T]ri - um - pho gau - dent re - gi - o a - mic - ti sto - lis [g]lo - ri - e

SF- Ant. Vörrå S.16:1
fol.92v



Tri - um - pho gau - dent re - gi - o a - mic - ti sto - lis glo - ri - e

LE S. Eri
(Nilsson 2000)



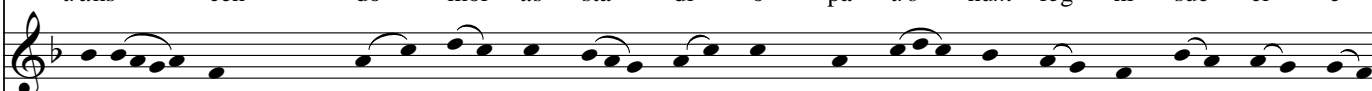
Co - ro - na ful - gens au - re - a flos dig - ni - ta - tis re - gi - e

Skara 1



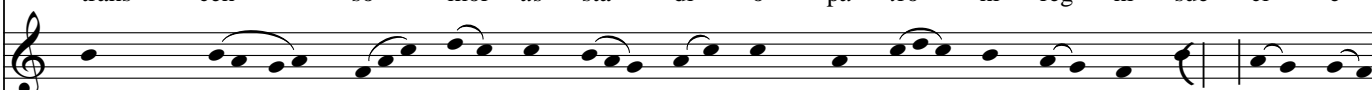
trans - cen - do mor - tis sta - di - o pa - tro - num reg - ni sue - ci - e

Bygdeå



trans - cen - so mor - tis sta - di - o pa - tro - ni reg - ni sue - ci - e

Ant 163



trans - cen - so mor - tis sta - di - o pa - tro - num reg - ni [s]ue - ci - e

Vörrå

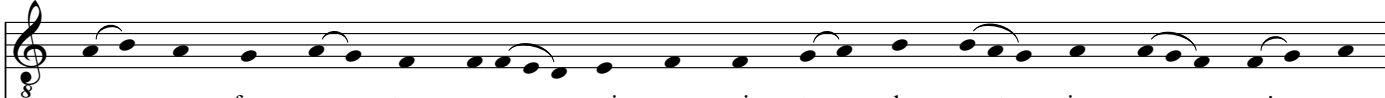



trans - cen - so[?] mor - tis sta - di - o pa - tro - num reg - ni swe - ci - e

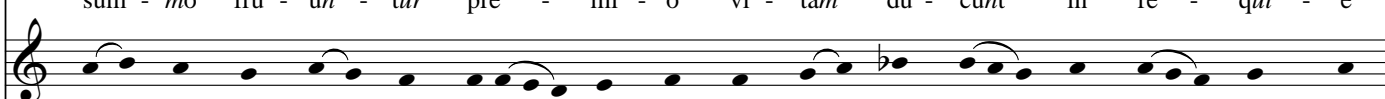
LE Eri

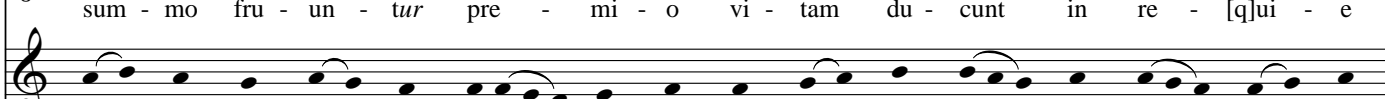


sanc - tus e - ri - cus ig - ne - a vi - cit te - la ma - li - ci e

Skara 1

 sum - mo fru - un - tur pre - mi - o vi - tam du - cunt in re - qui - e


Bygdeå

 sum - mo fru - un - tur pre - mi - o vi - tam du - cunt in re - qui - e

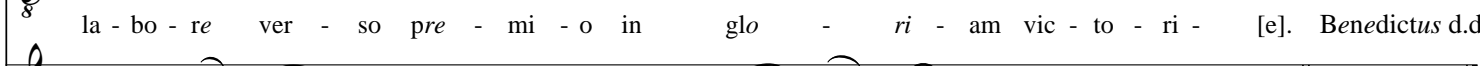
Ant 163

 sum - mo fru - un - tur pre - mi - o vi - tam du - cunt in re - [q]ui - e

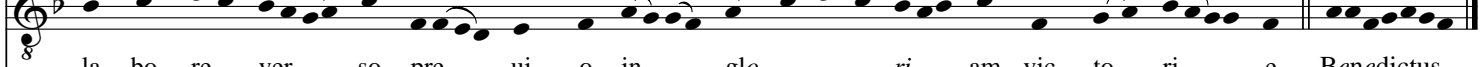
Vörå

 sum - mo fru - un - tur pre - mi - o vi - tam du - cunt in re - qui - e


LE Erics

 sic vic - tor ver - nans lau - re - a rex et pa - tro - nus swe - ci - e

Skara 1

 la - bo - re ver - so pre - mi - o in glo - ri - am vic - to - ri - [e]. *Benedictus* d.d.

Bygdeå

 la - bo - re ver - so pre - ui - o in glo - ri - am vic - to - ri - e. *Benedictus*

Ant 163

 la - bo - re uer - so pre - ui - o in glo - ri - am vic - to - ri - [e].

Vörå

 la - bo - re ver - so pre - <m>i - o in glo - ri - am vic - to - ri - e.

LE Erics

 fe - lix de do - mo lu - te - a trans - it ad reg - num glo - ri - e. *Benedictus*