


# Patroni VR


(Sections of the melody seem to reflect the R2 *Astans Dei iudicii* for S. Birgitte in the office *Rosa rorans*)

S-SK Skara mhs1  
S.16:1, fol. 156r/v



Fun - dans sy - on in sa - phi - ris pro - pug - nans - que ias - pi - di - bus


S-Häa Bygdeå-hs  
S.16:1, fol. 33r



Fun - dans sy - on in sa - phi - ris pro - pug - nans - que ias - pi - di - bus


*transpositio* *clef error*

S-Uu fragm. kat.1270  
(Inc.35b:94c) S:15:2




Fvn - dans sy - on in sa - phi - ris pro - pug - nans - que ias - pi - di - bus

S-Sr fr.20431  
Ant (167)184, S. 15:2



Fvn - dans sy - on in sa - phi-ris pro - pug - nans - que ias - pi - di - bus


S-Sr fr. 11001  
Ant 228(368), S. 15ex.



Fun - dans sy - on in sa - phi - ris pro - pug - nans - que ias - pi - di - bus

O R

SF- Ant.Vörå S.15:1,  
fol. 88v  
(difficult to encipher text)



Fun - dans sy - on in sa - phi - ris{ pro- pug - - nans{ }ias - pi - di - bus

Skara 1

glo - ri - o - sis or - nat vi - ris *chris* - tus pro se cer - tan - ti - bus.

Bygdeå

*clef error in the original*

glo - ri - o - sis or - nat vi - ris *cris* - tus pro se cer - tan - ti - bus.

UUB fr.

glo - ri - o - sis or - nat vi - ris *chris* - tus pro se cer - tan - ti - bus.

Ant 184

glo - o - sis or - nat vi - ris *chris* - tus pro cer - tan - ti - bus.

Ant 228

glo - ri - o - sis or - nat vi - ris *chris* - tus pro se cer - tan - ti - bus.

Vörå

glo - ri - o - sis or - nat vi - ris *chris* - tus pro se cer - tan - ti - bus.

Skara 1

In - sig - ni - tos mul - tis mi - ris pre - fe - cit se sci - en - ti - bus

Bygdeå

In - sig - ni - tos mul - tis mi - ris pre - fe - cit se sci - en - ti - bus

UUB fr.

In - sig - ni - tos mul - tis mi - ris pre - fe - cit se sci - en - ti - bus

Ant 184

In - sig - ni - tos mul - tis mi - ris pre - fe - cit se sci - en - ti - bus

Ant 228

In - sig - ni - tos mul - tis mi - ris pre -

Vörå

In - sig - ni - tos mul - tis mi - ris pre - fe - cit se sci - en - ti - bus

Skara 1

re - lax - a - tis pe-[nis] - nis di - ris in - dul get pe - ni - ten - - - ti - bus.

Bygdeå

re - lax - a - tis pe - nis di - ris In - dul get pe - ni - ten - - - ti - bus.

UUB fr.

re - lax - a - tis pe - nis di - ris in - dul get pe - ni - ten - - - ti - bus.

Ant 184

re - lax - a - tis pe - nis di - ris in - dul get pe - ni - ten - - - ti - bus.

Ant 228

Vörå

re - lax - a - tis pe-[nis] - nis di - ris in - dul get pe - ni - ten - - - ti - bus.

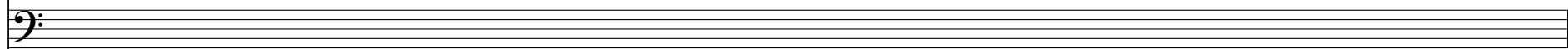
## Versus

Skara 1



Cre - dunt a - li - e - ni - ge - ne *et* fi - unt iam de - i - ge - ne pa - tro - nis pre - di - can - ti - bus.

Bygdeå



UUB fr.



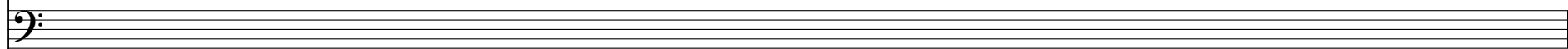
Cre - dunt a - li - e - ni - ge - ne *et* fi - unt iam de - i - ge - ne pa - tro - nis pre - di - can - ti - bus.

Ant 184



Cre - dunt a - li - e - ni - ge - ne *et* fi - unt iam de - i - ge - ne pa - tro - nis pre - di - can - ti - bus.

Ant 228




## Versus

Vöra




Cre - dunt a - li - e - ni - ge - ne *et* fi - unt iam de - i - ge - ne pa - tro - nis pre - di - can - ti - bus.

Skara 1




Glo - ri - a pa - tri et ffi - li - o et spi - ri - tu - i sanc - to.

Bygdeå




UUB fr.



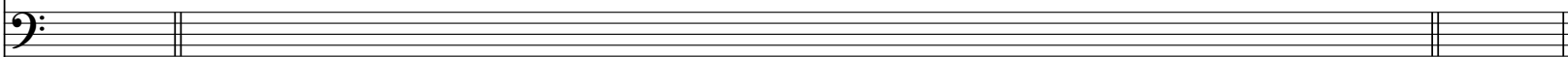
Insignitos. Glo - ri - a pa - tri et fi - li - o et spi - ri - tu - i sanc - to. Insignitos.

Ant 184




Glo - ri - a pa - tri et fi - li - o et spi - ri - tu - i sanc - to.

Ant 228



Vörå



In signitos. Glo - ri - a pa - tri et ffi - li - o et spi - ri - tu - i sanc - to. In.