

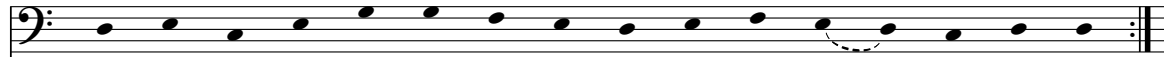
Sigfrids sekvens *Clara laude* (AH 42:321)

(Jfr Moberg 1927, s. 65 not 1)

(1)

(1b: ED)

BrMi 6
Fr. 25020
S. 13



Cla - ra lau - de tur - ma plau - de dul - ci uo - ce al - le - lu - ia
Ad e - ter - ni re - gis lau - dem qui gu - ber - nat om - ni - a

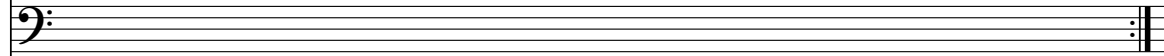
(1b: ED)

Mi 375
Fr. 27036
S. 15 (14/15?)



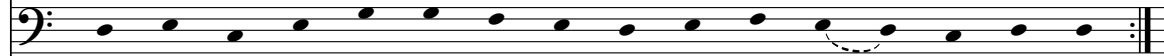
Cla - ra lau - de tur - ma plau - de dul - ci uo - ce al - le - lu - ia
Ad e - ter - ni re - gis lau - dem qui gu - ber - nat om - ni - a.

Sequ 1
Fr. 28076
S. 15



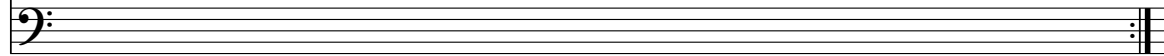
(1b: ED)

Sequ 60
Fr. 9484
S. 15



Cla - ra lau - de tur - ma plau - de dul - ci uo - ce al - le - lu - ia
Ad e - ter - ni re - gis lau - dem qui gu - ber - nat om - ni - a

Gr 116
Fr. 25337
S. 15



BrMi 6

(2) (2b: a) (2b: b) (2b: a)

Quem iu - bi - lant ce - li sum - ma sol lu - na at - que ast - ra
 Ma - re so* - lum et* flu - mi* - na cunc - ta - que nas[

MI 375

Quem iu - bi - lant ce - li sum - ma sol lu - na at - que ast - ra
 Ma - re so - lum et flu - mi - na cunc - ta - que nas - cen - ci - a.

SEQU 1

SEQU 60

(2b: b)

Quem iu - bi - lant ce - li su[at - que ast - ra
 Ma - re so - lum et* flu - mi - na cunc - ta - que nas - cen - ci - a.

GR 116

BrMi 6

]dum hijs ad - uex - it o - ris o - lim ab ang - li - a[
]vn - da di - lu - e - ret sac - ra

(3)

MI 375

Qui sig - fri - dum hijs ad - uex - it o - ris o - lim ab ang - li - a
 Vt gen - ci - um na - ci - o - nem vn - da di - lu - e - ret sac - ra.


SEQU 1

SEQU 60

Qui sig - fri - d[]o - lim o - ris ab ang - li - a
 Vt gen - ci - um na - ci - o - nem vn - da di - lu - e - ret sac - ra

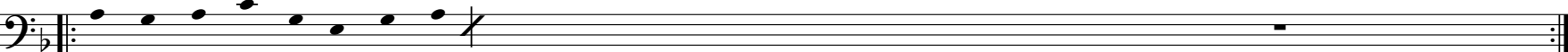
GR 116

BrMi 6 (4)



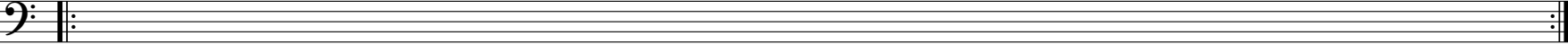
De[]cul - tum de - i vo - ca - ta sig - fri - di per doc {tri - nam} re - ris ce - les - ti - a si co - lis ues - ti - gi - a.

MI 375 (4)




De - mo - num do - la se - duc ta

SEQU 1




SEQU 60



D[]se - duc - ta y - do - la - tra ef - fec - ta red - emp - to - ris in con temp - tum er - ro - ris per de - vi - a
A[d]ta sig - fri - di { }o - lis ves - ti - gi - a.

GR 116



]lo se - duc ta y - do - la - tra ef - fec - ta[]ris in con - temp - tum er - ro - r<is>per de[
]cul - tum de - i uo - ca - ta sig - fri - di per doc - tri - nam{pro n[]}ti - a si co - lis ves - ti - gi - a.

(5)

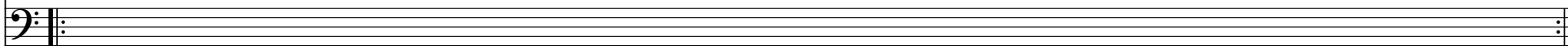
*) (5b: D-ED)

BrMi 6

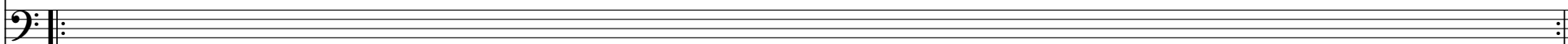


Spon - sa *chris - ti* iam es fac - ta co - o - per - an - te gra - ti - a fe - cun - da - ris in fe - cun - da plo - re le - ta - ris in - cli - ta
 Gau - de nam - que *chris - ti* - co - la swe - uo - rum nunc ec - cle - si - a tan - to pat - re sub - li - ma - ta* lau - da sig - fri - di me - ri - ta.

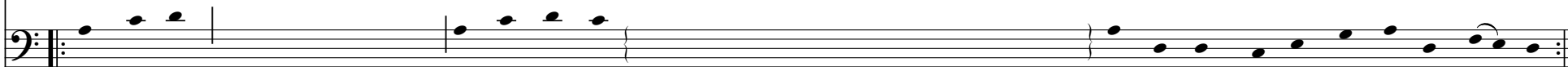
MI 375



SEQU 1



SEQU 60



Spon - sa *chris - ti* co - op - e - rante { gratia } cun - da pro - le le - ta - ris in - cli - ta.

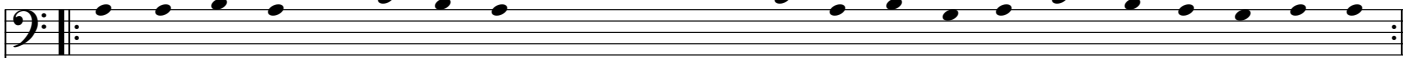
GR 116



Spon - sa *chris - ti* [iam/nam?est?] fac - ta { co[-]te gra - ti - a fe - cun - da - ris in fe - cun - da pro - le le { - t[
 Gau - de nam - que *chris - ti* - co - la swe - wo - rum nunc ec - cle - si - a t[]sub - li - ma - ta lau - de siph - fri - di me - ri - ta

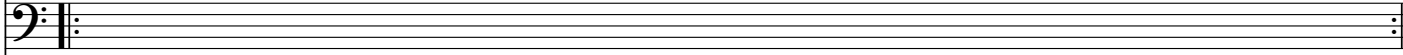
(6)

BrMi 6

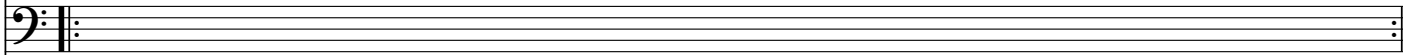


Hu - ius fes - ta mens de - uo - ta fre - quen - ta - re iam sa - ta - ge co - len - do ce - le - bri - a.
 Nunc be - a - te o sig - fri[-de] com - men - da - re nos dig - na - re in ce - i pa - la - ti - a.

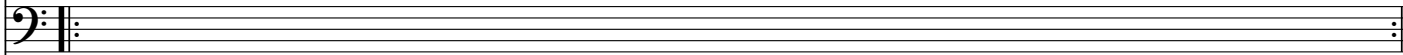
MI 375



SEQU 1



SEQU 60



GR 116



Cu - ius fes - ta[]ta fre - quen - ta - re iam sa - ta - ge co - len - do ce - le - bri - a.
 Nunc{ be}[]{o} sig - fri - de com - men - da - re nos dig - na - re in ce - i pa{ - la - ci - a}{

BrMi 6



U - bi de - um col - lau - da - re me - re - a - mur et a ma - re per e - ter - na se - cu - la.
I - ter nost - rum de - ui - a - uit et ex vi - a de - cli - na - uit a - vir - tu - tum se - mi - ta.

MI 375

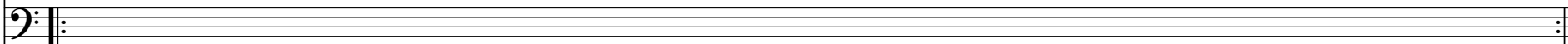


SEQU 1

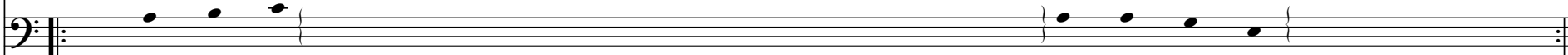


I - ter nost - rum de - ui - a - uit et ex vi - a de - cli - na - uit a - vir - tu - tum se - mi - ta.
]mur et a ma - re per e - ter - na se - cu - la.

SEQU 60



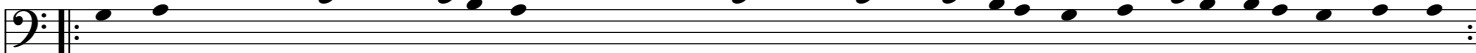
GR 116



}col{ -

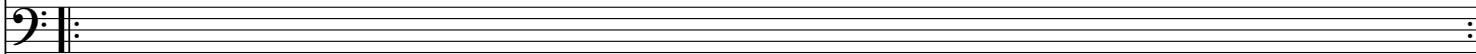
(8)

BrMi 6



Ut e - a - mus in - ter tu - tum re - duc ad cor men - tis gres - sum pi - e - ta - te so - li - ta.
 Hos - tis nos - ter e - van[- es c]at et a frau - de e - lan - gues - cat de - i pro - ui - den - ti - a.

MI 375

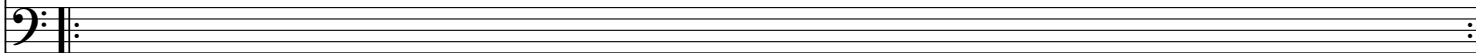


SEQU 1



Et e - a - mus i - ter tu - tum re - duc ad tor(?)men - tis gres - sum pi - e - ta - te so - li - ta.
 Hos - tis nunc e - ua<n>u - es - cat et a frau - de e - uan - es - cat(?) de - i pro - ui - den - ti - a.

SEQU 60



GR 116



BrMi 6 (9) (9a: ha-G, 9b: h-aG)

Musical staff for BrMi 6 in bass clef. It contains a melodic line with notes corresponding to the lyrics. There are two performance markings: (9) above the first note and (9a: ha-G, 9b: h-aG) above a slur covering the 9th and 10th notes.

Su - per - na ma - tris gra - ci - a col - lo - cet nos in glo - ri - a
 In qua fru - i me - re - a - mur ple - na de - []ti - a.

MI 375

Empty musical staff for MI 375 in bass clef.

SEQU 1

Musical staff for SEQU 1 in bass clef. It contains a melodic line with notes corresponding to the lyrics.

Su - per - na ma - ter gra - ci - a col - lo - cet nos in glo - ri - a
 in qua fru - i me - re - a - mur ple - na de - i le - ti - ti - a.

SEQU 60

Empty musical staff for SEQU 60 in bass clef.

GR 116

Musical staff for GR 116 in bass clef. It contains a few notes corresponding to the lyrics.

de - i

BrMi 6 (10 a) (10 b)

Sy - on sanc - ta nos ac - cep - tat in sum - mum re - gis cu ri - a In qua ful - get nunc sig - fri - dus per doc - tri - na ca - tho - li - ca.

MI 375

SEQU 1 (a) (10 b)

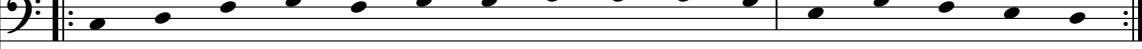
Sy - on sanc - ta nos ac - cep - tat in su - per - ni re - gis cu ri - a in qua nunc ful get sig - fri - dus pro doc - tri - na ca - tho - li - ca.

SEQU 60

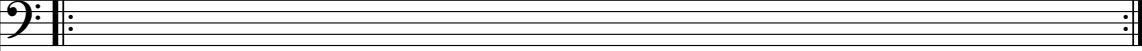
GR 116

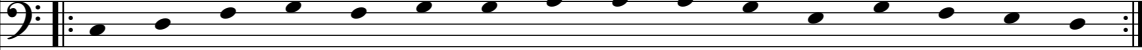
nos {sigh}

(11)

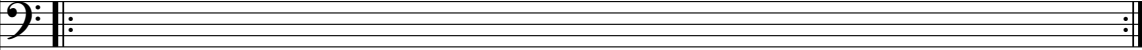
BrMi 6 


Cu - ius lau - dum pre - co - ni - a in - ci - ta[- ecc - le - si - a.
 Dum ce - le - bran - tur a - nim - a e - ius na - ta - li - ci - a.

MI 375 

SEQU 1 

Cu - ius lau - dem pre - co - ni - a in - ci - ta - tur ec - cle - si - a
 cum ce - le - bran - tur an - nu - a e - ius na - ta - li - ci - a.

SEQU 60 

GR 116 

(12)

(12a: E-D?)

BrMi 6



Hinc et ma - ter ec - cle - sia[]ro - rum de - ui - a
Cu - ius ce - le - bri doc - tri - na fi - des fir - ma - tur v - ni - ca.

MI 375

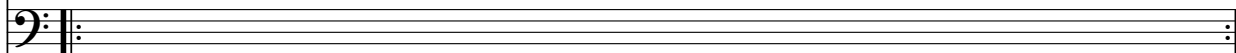


SEQU 1

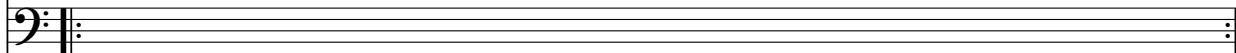


Hinc et ma - ter ec - cle - si - a sper - nit er - ro - rum de - ui - a
Hu - ius ce - le - bri doc - tri - na fi - des fir - ma - tur v - ni - ca.

SEQU 60



GR 116



(13)

BrMi 6

A musical staff in bass clef with a key signature of one flat. It contains a sequence of 13 notes: G2, A2, B2, C3, D3, E3, F3, G3, A3, B3, C4, D4, E4. The notes are connected by a slur, and there is a repeat sign at the end.

Hu - ius se - qui ves - ti - gi - a et pre - di - ca - re dog - ma - ta
Fi - de ve - ra ac fer - ui - da det no - bis de - i gra - ti - a.

MI 375

A musical staff in bass clef, currently empty.

(13)

SEQU 1

A musical staff in bass clef with a key signature of one flat. It contains a sequence of 13 notes: G2, A2, B2, C3, D3, E3, F3, G3, A3, B3, C4, D4, E4. The notes are connected by a slur, and there is a repeat sign at the end.

Hu - ius se - qui ves - ti - gi - a et pre - di - ca - re dog - ma - ta
Fi - de ve - ra ac fe - cun - da det no - bis de - i gra - ci - a.

SEQU 60

A musical staff in bass clef, currently empty.

GR 116

A musical staff in bass clef, currently empty.