

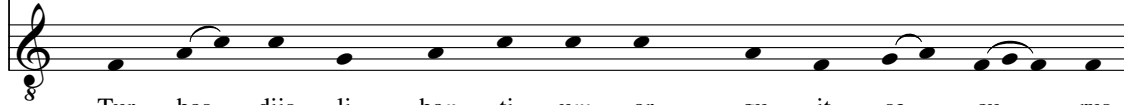
R5, *In figuris*
(cf. ESKIL R5, 1st line)

MPO 7701
S. 15. fol.1r



In fi - gu - ris plu - ri - bus ser - tum fi - gu - ra - tur

ESKIL R5
Skara mhs 1, S.16



Tur - bas diis li - ban - ti - um ar - gu - it se - cu - rus

MPO 7701



in - ter vep - res cor - ni - bus [he] - rens de - mons - tra - tur

ESKIL R5



mi - nas sper - nens hos - ti - um hos - ti - a fu - tu - rus

MPO 7701



a - ri - es. Sic sen - si - bus chris - tus co - {ro} - na - tur al - le - lu - ia.

ESKIL R5



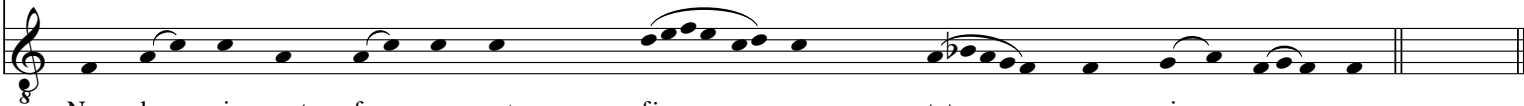
Nec pat - rem ex - i - mi - um flec - tit ser - mo du - rus.

MPO 7701



Pra - vo - rum ma - ni - bus su - a sanc - ta co - ro - na pa - ra - tur. Sic.

ESKIL R5



Non la - pis aut fer - rum set fir - mus stat qua - si mu - rus.